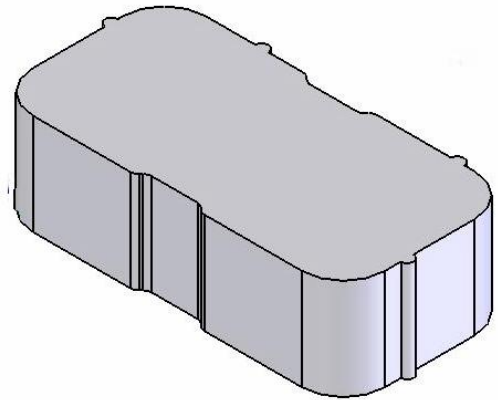


RainPAVE™

- The environmental choice to preserve natural water drainage with the look of a historic clay pavement.
- Perfect for driveways in impervious surface restricted areas or where onsite retention/infiltration is mandated.
- High infiltration rate when installed in a “best practice” permeable pavement system.
- Rumbled for traditional, antique clay paver look.
- 2 3/4” x 4” x 8” with 8 1/2% Void Area.
- Genuine Clay Paver—Strong, Durable & Colorfast.



800-334-8689
www.americaspremierpaver.com

